



# GAT MONTHLY MEMBERSHIP PROGRESS REPORT

Results as of: 7/31/2020

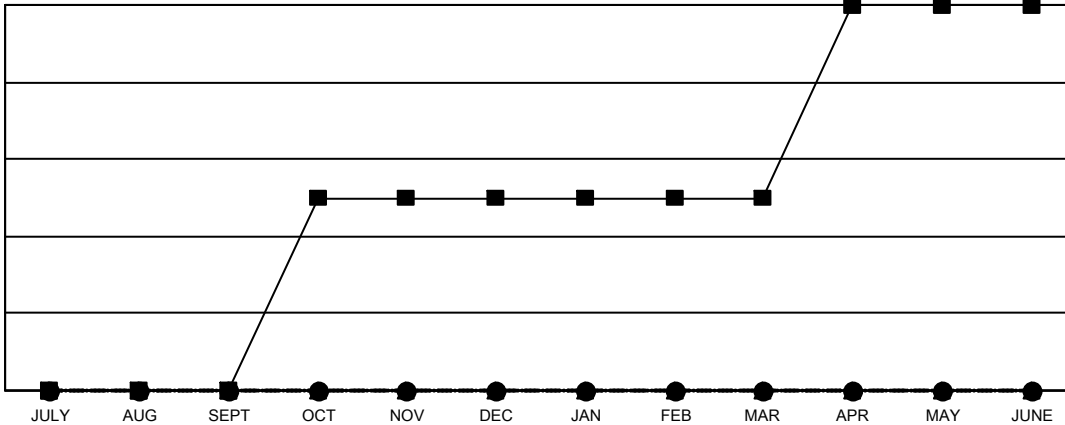
Multiple District 60

LOCATION: GUYANA

| Clubs                 |               |           |               |
|-----------------------|---------------|-----------|---------------|
| RESULTS FOR 2020-2021 |               |           |               |
| QUARTER               | NEW CLUB GOAL | NEW CLUBS | DROPPED CLUBS |
| JULY/AUG/SEPT         | 0             | 0         | 0             |
| OCT/NOV/DEC           | 1             | 0         | 0             |
| JAN/FEB/MAR           | 0             | 0         | 0             |
| APR/MAY/JUNE          | 1             | 0         | 0             |

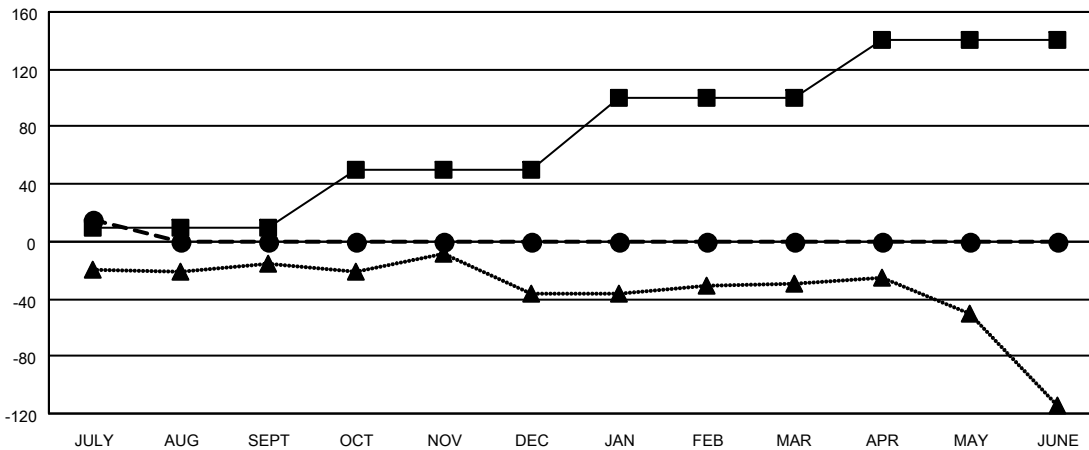
| Members               |                        |                      |  |
|-----------------------|------------------------|----------------------|--|
| RESULTS FOR 2020-2021 |                        |                      |  |
| QUARTER               | MEMBER GROWTH NET GOAL | MEMBER GROWTH ACTUAL | DROPPED MEMBERS ACTUAL (including transfers) |
| JULY/AUG/SEPT         | 10                     | 38                   | 18   |
| OCT/NOV/DEC           | 40                     | 0                    | 0  |
| JAN/FEB/MAR           | 50                     | 0                    | 0  |
| APR/MAY/JUNE          | 40                     | 0                    | 0  |

GOALS AND ACTUAL NEW CLUBS CUMULATIVE



- - CURRENT YEAR GOALS FOR NEW CLUBS
- - CURRENT YEAR ACTUAL NEW CLUBS
- ▲ - LAST YEAR ACTUAL NEW CLUBS

GOALS AND ACTUAL MEMBERS CUMULATIVE



- - MEMBER GROWTH NET GOAL
- - MEMBER GROWTH ACTUAL
- ▲ - LAST YEAR MEMBERSHIP ACTUAL

|                        |   |                                    |
|------------------------|---|------------------------------------|
| DROPPED CLUBS: 0       | 13 CLUBS OF 119 ADDED 1 OR MORE NEW MEMBERS               | <u>GENDER DISTRIBUTION</u>         |
|                        |   | MALE 1,507 (44.18%)                |
|                        |   | FEMALE 1,904 (55.82%)              |
| <u>DROPPED MEMBERS</u> | <a href="#">CLICK HERE FOR CUMULATIVE MEMBERSHIP DATA</a> | TOTAL FAMILY UNIT MEMBERS 129      |
| DECEASED 3             |   | FAMILY MEMBERS PAYING HALF DUES 67 |
| CLUB CANCELLED 0       |   |                                    |
| OTHER 15               |   |                                    |
| <b>TOTAL 18</b>        |   |                                    |